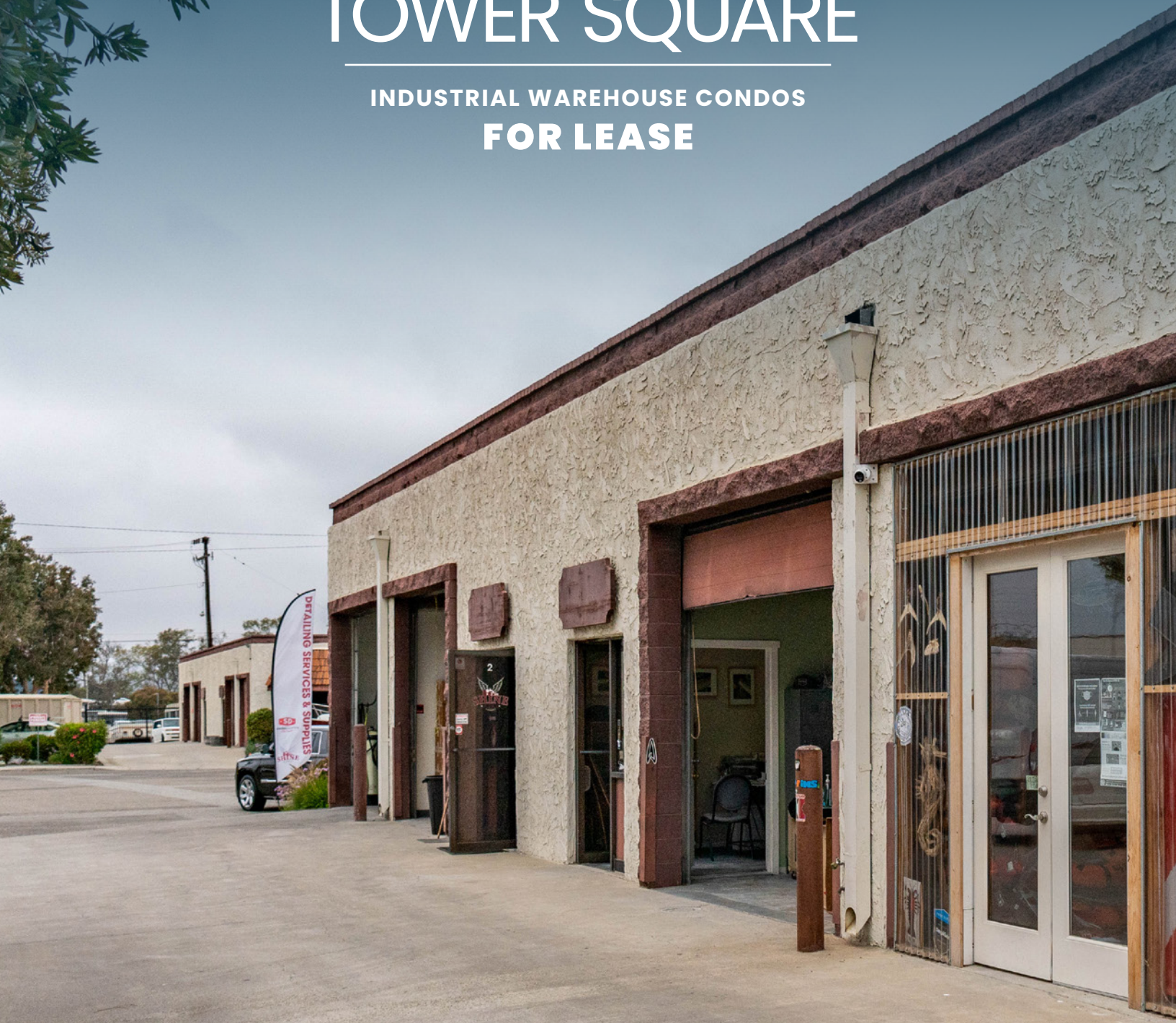


1301-1412 TOWER SQUARE

INDUSTRIAL WAREHOUSE CONDOS
FOR LEASE



STRATTONCRE.COM
1301-1412 TOWER SQUARE, VENTURA, CA 93003

1301-1412 TOWER SQUARE

VENTURA, CA 93003



MULTI-TENANT INDUSTRIAL WAREHOUSE UNITS

Stratton Commercial Real Estate is pleased to present units at 1301-1412 Tower Sq for lease. This 34,252 sq.ft. multi-tenant industrial center features 814-1,288 sq.ft. industrial warehouses with tall clear height and ground-level loading. Contact Robert Stratton for lease terms & more details.

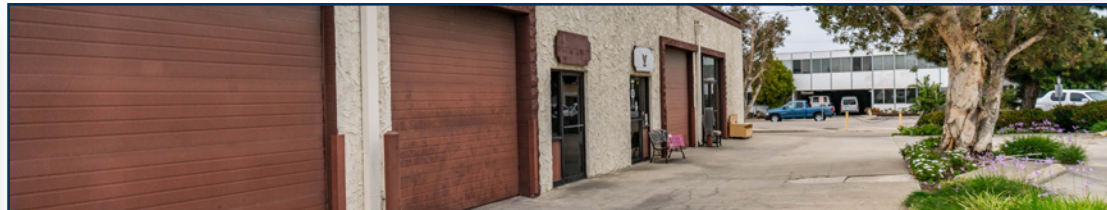
MULTI-TENANT
INDUSTRIAL IN
CUL-DE-SAC



PARKING
DIRECTLY IN
FRONT OF UNIT



BUILDING
SIGNAGE ABOVE
EACH UNIT



PROPERTY DETAILS	
PROPERTY TYPE.....	INDUSTRIAL
BUILDING SQ.FT.....	34,252
LOT SIZE SQ.FT.....	50,094
OCCUPANCY.....	MULTI-TENANT
YEAR BUILT.....	1979
FLOORS.....	1
DRIVE-IN DOORS.....	17X 10'X10'
DOCK HIGH DOORS.....	0
APN(S).....	138-0-113-110, +4
BUILDING HEIGHT.....	14'
PARKING SPACES.....	58 SPACES - 1.70/1000 SQ.FT.
ZONING.....	MI

AVAILABLE UNITS

1301-#2
1,120 SQ.FT.

1358-#3
1,288 SQ.FT.

1412-#3
1,288 SQ.FT.



Robert Stratton

CEO/President - DRE #01182000

Cell: 661-212-5699

Robert@StrattonCRE.com



Olga Khusid

Property Manager - DRE #01926526

Direct: 661-452-8878

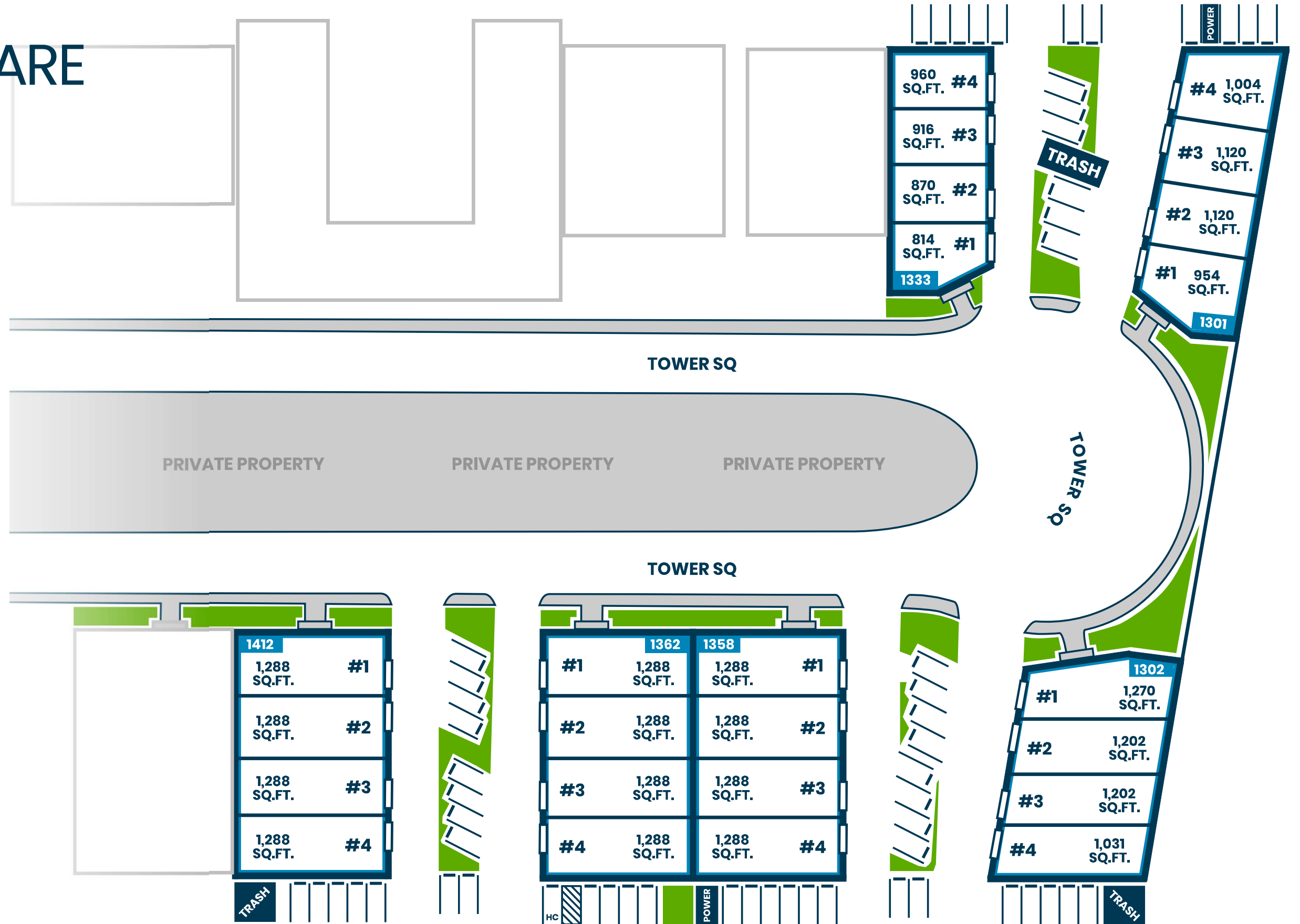
Olga@StrattonCRE.com



1301-1412 TOWER SQUARE

VENTURA, CA 93003

SITE PLAN





PRIVATE PARKING



1301-1412 TOWER SQUARE

INDUSTRIAL WAREHOUSE CONDOS
FOR LEASE

FOR MORE INFORMATION:



Robert Stratton

CEO/President - DRE #01182000

Cell: 661-212-5699

Robert@StrattonCRE.com



Olga Khusid

Property Manager - DRE #01926526

Direct: 661-452-8878

Olga@StrattonCRE.com

The information in this brochure has been obtained from sources believed to be reliable. While we do not doubt its accuracy, we have not verified it and make no guarantee, warranty or representation about it. It is your responsibility to independently confirm its accuracy and completeness.

