

FOR LEASE

**1318**

**N HIGHLAND AVE**

LOS ANGELES, CA 90028

**AUTOMOTIVE SPACE**

1318

**STRATTON**  
COMMERCIAL REAL ESTATE

[STRATTONCRE.COM](http://STRATTONCRE.COM)



# 1318 HIGHLAND AVE

LOS ANGELES, CA 90028

## FOR LEASE

\$5,850.00/MONTH

\$3.75/SQ. FT./MONTH

TRIPLE NET



## Daniel Stratton

Vice President of Sales - DRE #01986597

Cell: 661-414-6364

Daniel@StrattonCRE.com

The information in this brochure has been obtained from sources believed to be reliable. While we do not doubt its accuracy, we have not verified it and make no guarantee, warranty or representation about it. It is your responsibility to independently confirm its accuracy and completeness.





OFFERING SUMMARY

# 1318 N HIGHLAND AVE

## AUTOMOTIVE SPACE FOR LEASE

Stratton Commercial Real Estate is pleased to present an automotive industrial facility available for lease at 1318 N Highland Avenue in Los Angeles, California. The property features a ±1,560 square foot building situated on a ±4,905 square foot lot, offering a highly functional layout for automotive repair, auto body, detailing, or specialty vehicle service users in the Hollywood submarket.

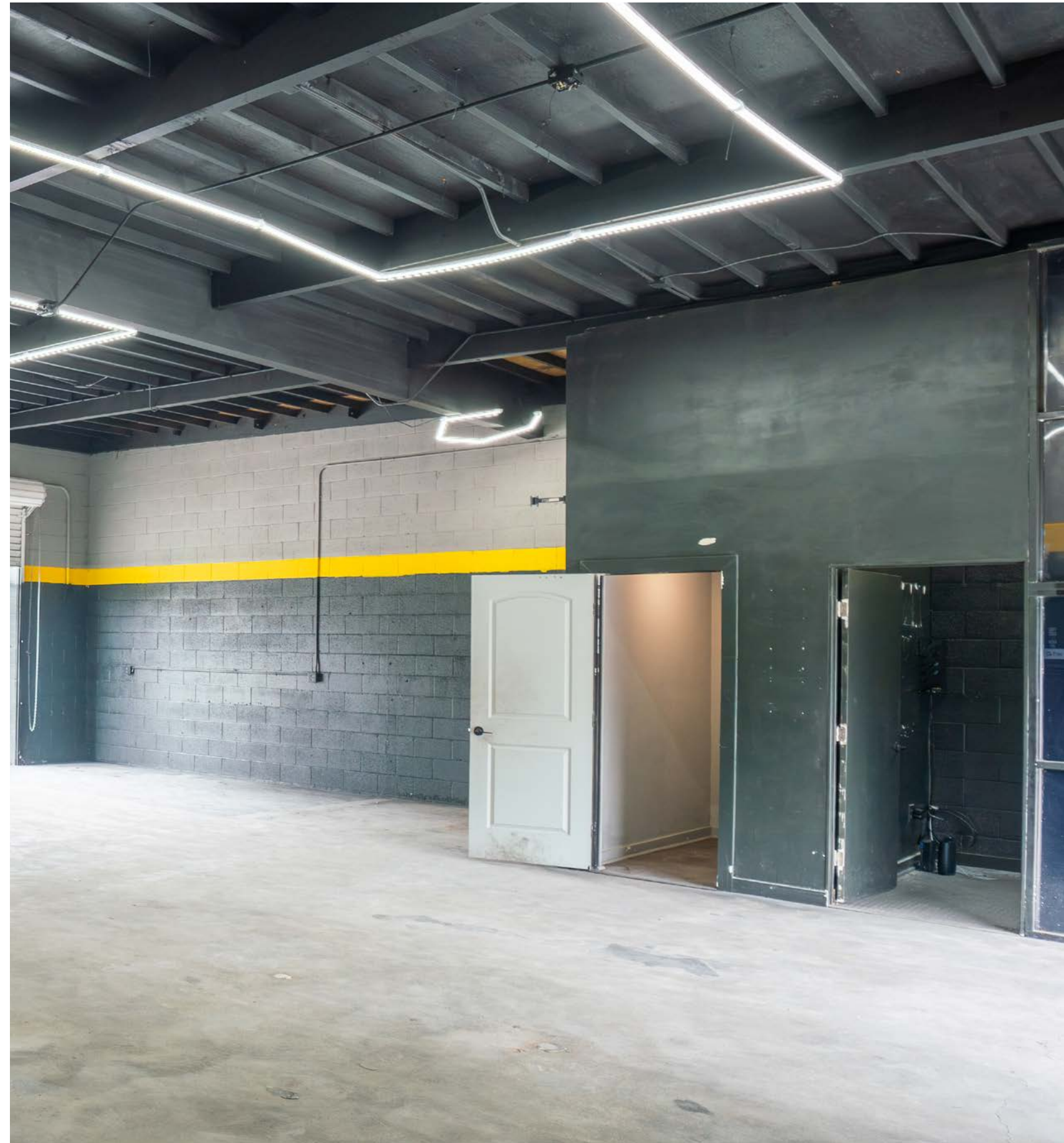
The building features an open, clear-span automotive shop with high ceilings, polished concrete flooring, and modern LED lighting throughout. Multiple ground-level roll-up doors provide efficient vehicle access and circulation, supporting smooth day-to-day operations.

A fully gated concrete yard provides valuable on-site vehicle parking, staging, or work-in-progress storage, enhancing both security and operational flexibility. The yard layout allows for easy vehicle maneuverability, an increasingly hard-to-find feature in this infill Los Angeles location.

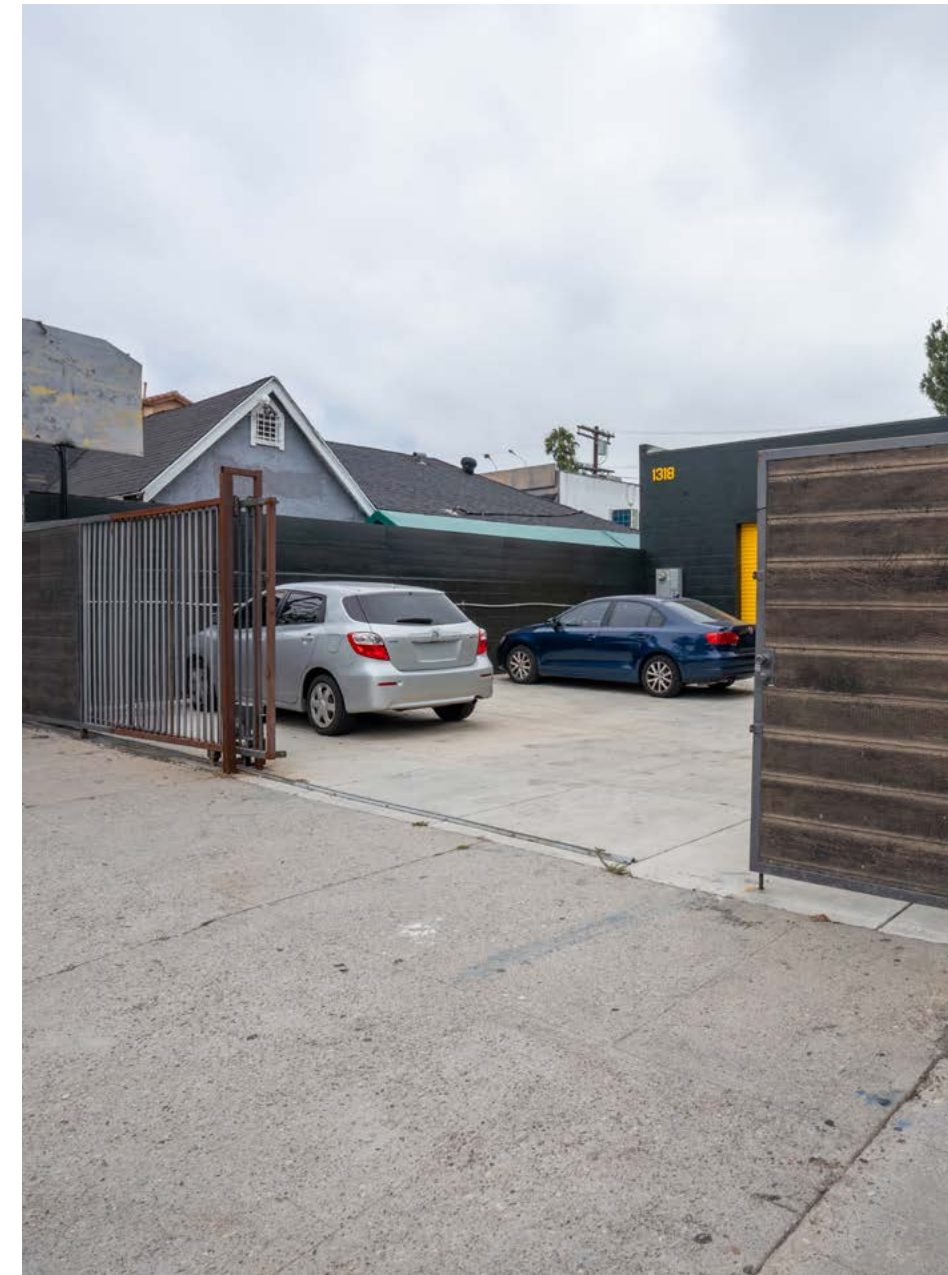
Situated along North Highland Avenue, the property offers convenient access to Hollywood, West Hollywood, and surrounding Los Angeles markets, making it an ideal facility for automotive users seeking central location and functional outdoor space.

For more information or to schedule a private tour, please contact Daniel Stratton.

<b>BUILDING SQ.FT</b> .....	1,560±
<b>LOT SQ.FT</b> .....	4,905±
<b>GROUND LOADING</b> .....	4 ROLL-UP DOORS
<b>ZONING</b> .....	LAC2
<b>APN</b> .....	5547-033-011





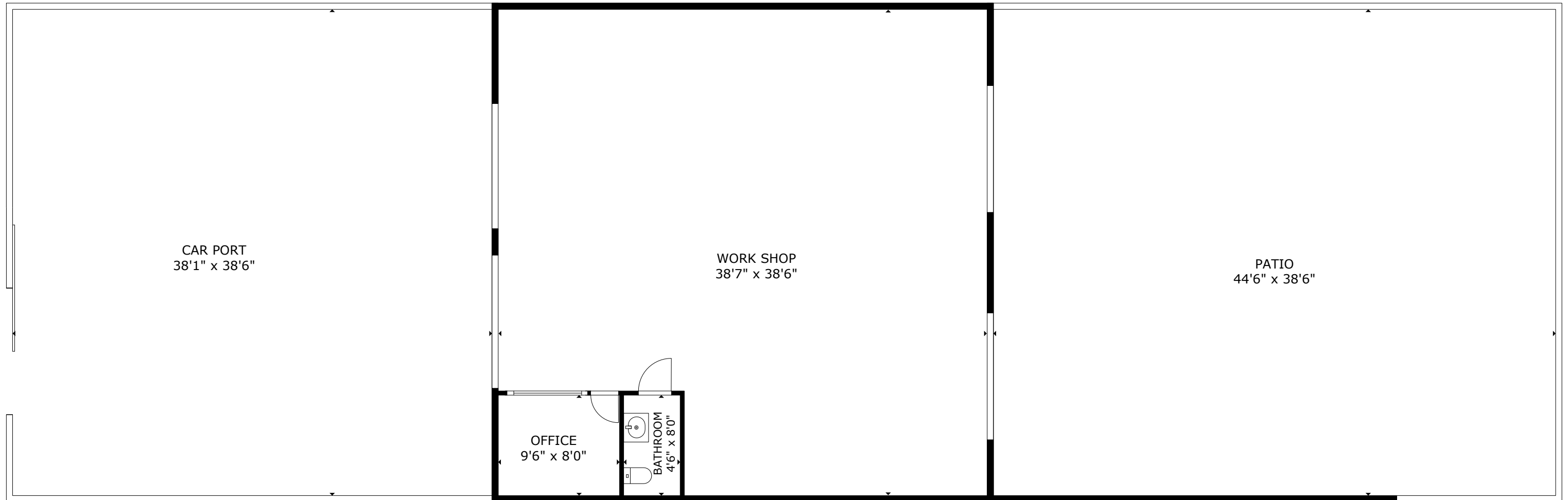




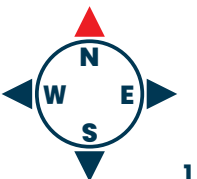
# 1318 N HIGHLAND AVE

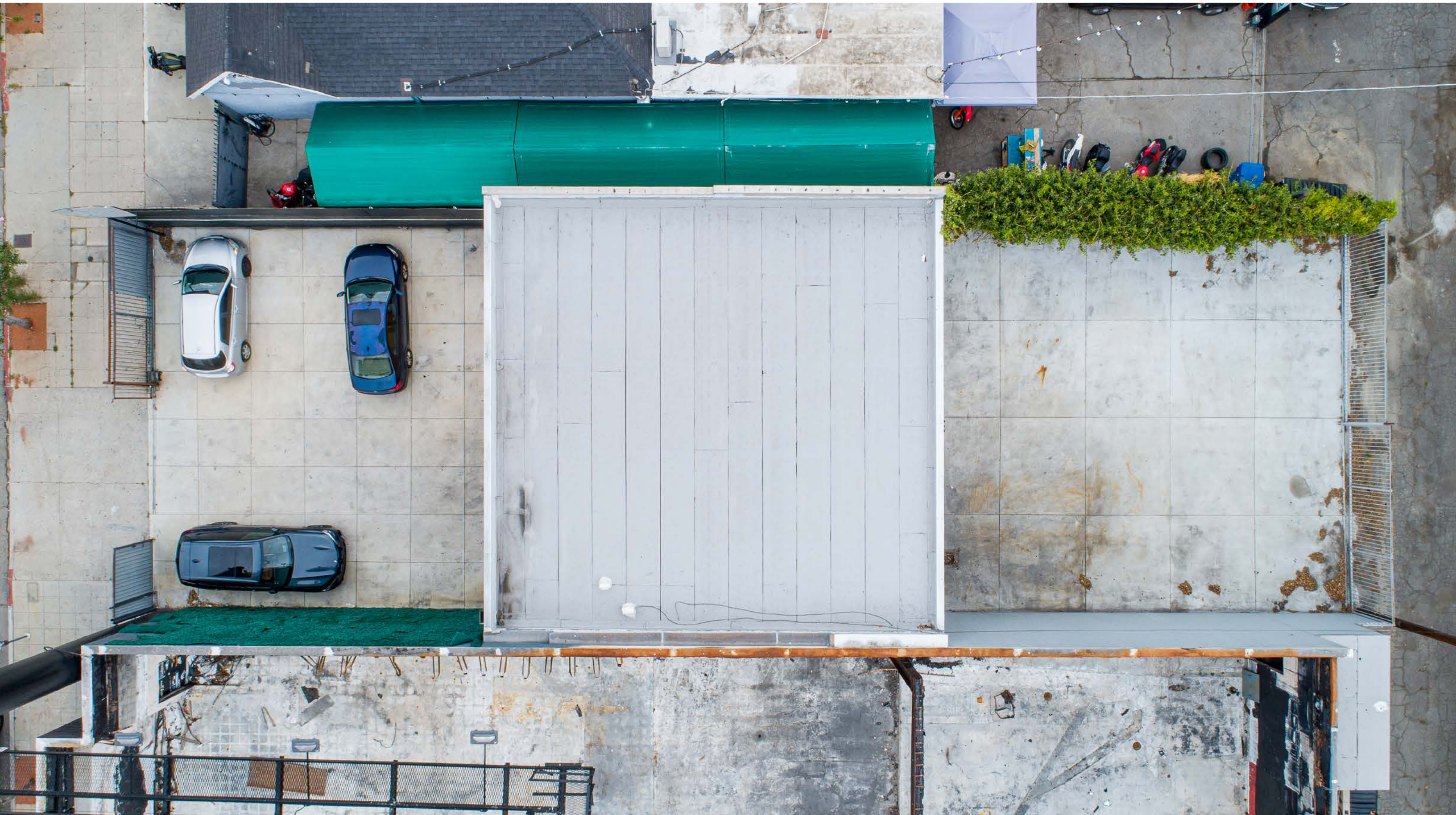
LOS ANGELES, CA 90028

## FLOOR PLAN



The information in this floorplan has been obtained from sources believed to be reliable. While we do not doubt its accuracy, we have not verified it and make no guarantee, warranty or representation about it. It is your responsibility to independently confirm its accuracy and completeness.





# 1318 HIGHLAND AVE

LOS ANGELES, CA 90028

**AUTOMOTIVE SPACE - FOR LEASE**

**FOR MORE INFORMATION:**



**Daniel Stratton**

Vice President of Sales - DRE #01986597

**Cell: 661-414-6364**

**Daniel@StrattonCRE.com**

The information in this brochure has been obtained from sources believed to be reliable. While we do not doubt its accuracy, we have not verified it and make no guarantee, warranty or representation about it. It is your responsibility to independently confirm its accuracy and completeness.

