

FOR LEASE

17425
CHATSWORTH ST
GRANADA HILLS, CA 91344

OFFICE SUITES





17425
CHATS WORTH ST
GRANADA HILLS, CA 91344

FOR LEASE



Robert Stratton

CEO/President - DRE #01182000

Cell: 661-212-5699

Robert@StrattonCRE.com

The information in this brochure has been obtained from sources believed to be reliable. While we do not doubt its accuracy, we have not verified it and make no guarantee, warranty or representation about it. It is your responsibility to independently confirm its accuracy and completeness.

STRATTON COMMERCIAL REAL ESTATE, INC.



OFFICE SUITES

731 SQ.FT. AVAIL

7,590 SQ.FT. BLDG



OFFERING SUMMARY

17425 CHATSWORTH ST GRANADA HILLS, CA 91344

Stratton Commercial Real Estate, Inc. is pleased to present 17425 Chatsworth St, a 7,656 sq.ft. high-image office building on 11,770 sq.ft. of CR-zoned land in Granada Hills, CA. This beautiful property is ideally located near numerous local amenities with convenient access to the 405 and 118 freeways.

The property features monument and building signage, common-area restrooms, floor-to-ceiling windows, well-maintained landscaping, alleyway access, and more. Suite 101 is available with 731 sq.ft. Lessor pays for water, lessee covers all other utilities.

Contact Robert Stratton for more information about leasing space in this Granada Hills office building.

AVAILABLE SQ.FT	731±
BUILDING SQ.FT	7,656±
LOT SIZE ACRES	11,770±
YEAR BUILT	1986
FLOORS	2
APN(S)	2712-026-033
ZONING	LACR
PARKING	17 SPACES







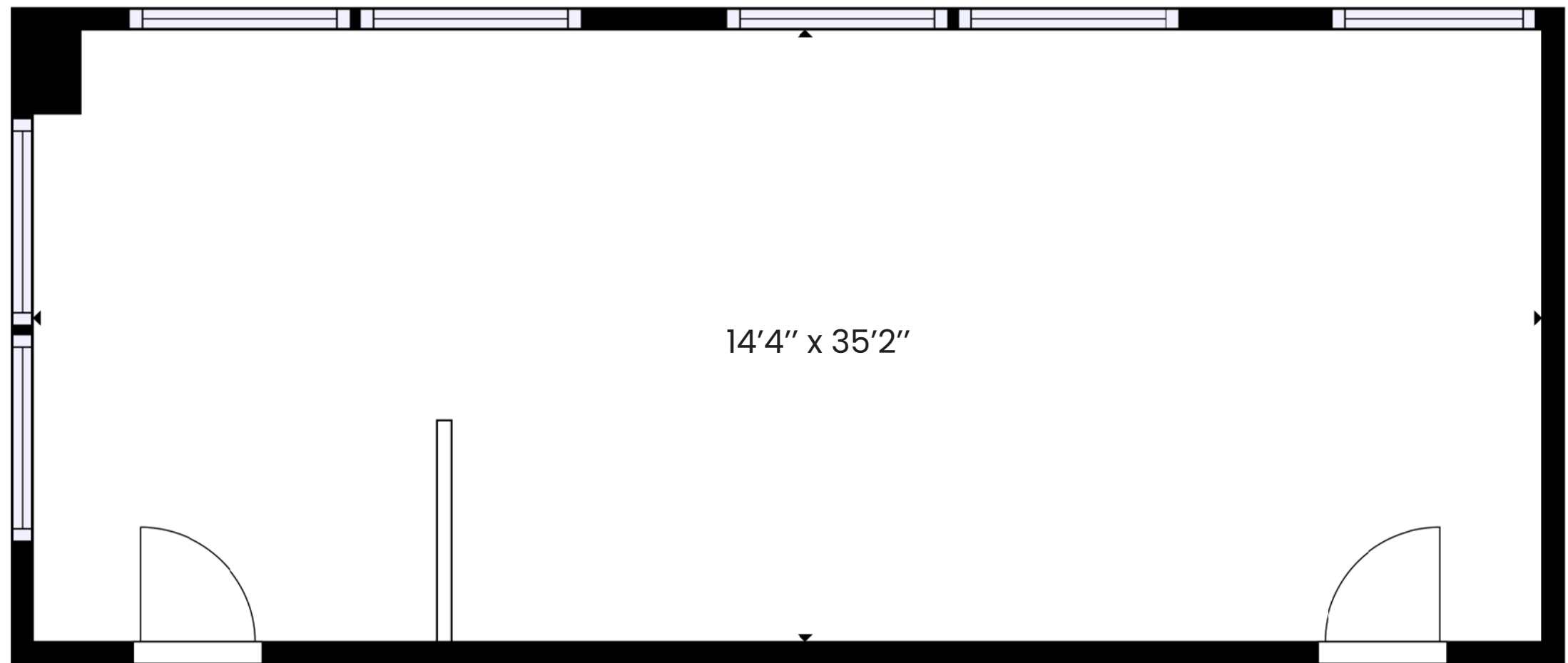




17425

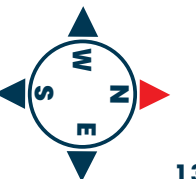
CHATSWORTH ST
GRANADA HILLS, CA 91344

Suite 101 FLOOR PLAN



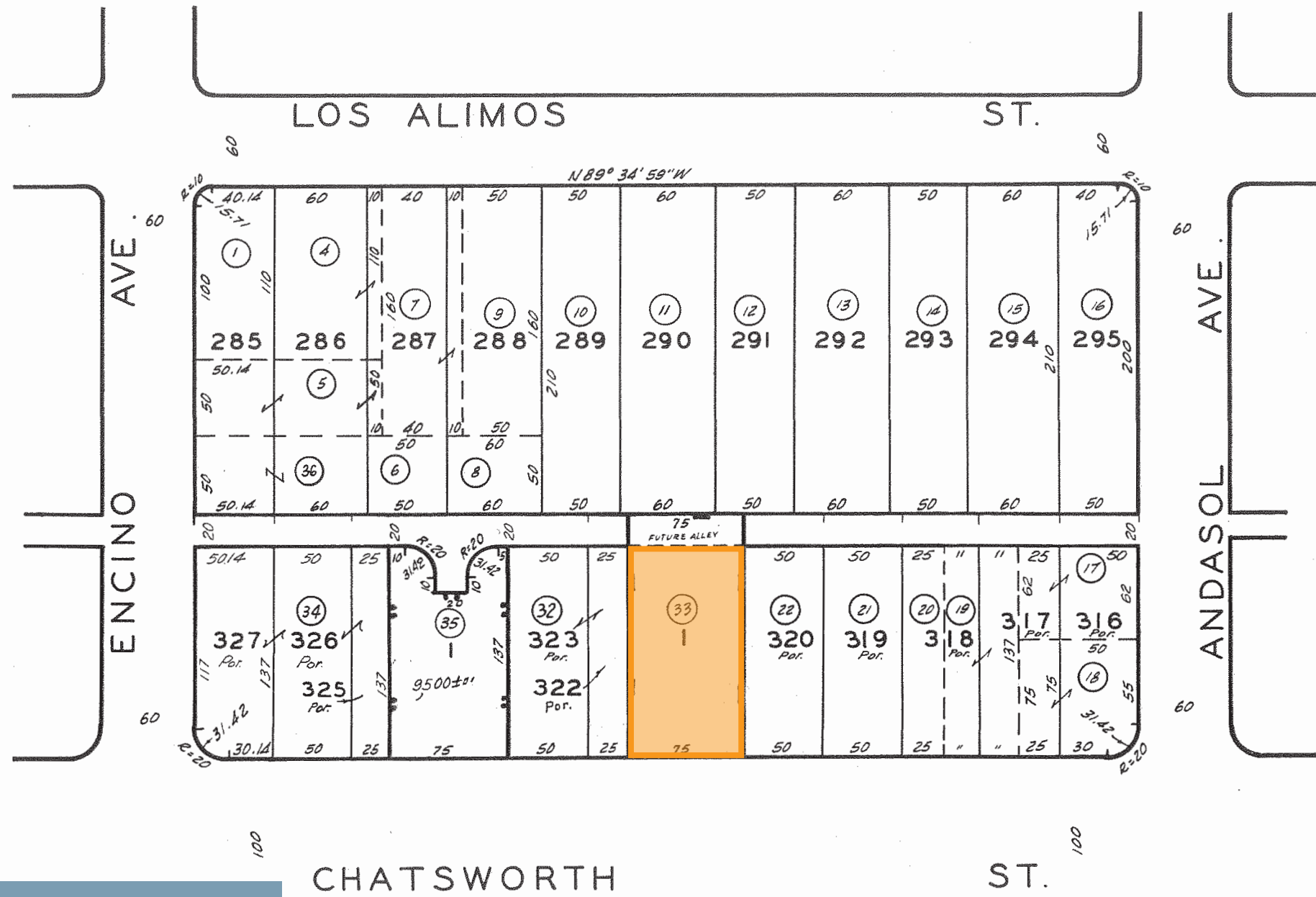
SCAN, TAP or CLICK!

The information in this floorplan has been obtained from sources believed to be reliable. While we do not doubt its accuracy, we have not verified it and make no guarantee, warranty or representation about it. It is your responsibility to independently confirm its accuracy and completeness.



2712 | 26
SCALE 1" = 80'

3-1-65 Revised
11-21-62
10-4-637
7-6-64
9-26-64
681113611
750508208
751208101
760607



17425 CHATSWORTH ST
PARCEL MAP

TRACT NO. 9668
M. B. 135-1-4

TRACT NO. 29705
M. B. 726-70



661-702-9700 | 28005 SMYTH DR, VALENCIA, CA 91355 | STRATTONCRE.COM

17425

CHATSWORTH ST

PROFESSIONAL OFFICE SPACE FOR LEASE

PREPARED BY



Robert Stratton

CEO/President - DRE #01182000

Cell: 661-212-5699

Robert@StrattonCRE.com

DRE License No.
01182000

The information in this brochure has been obtained from sources believed to be reliable. While we do not doubt its accuracy, we have not verified it and make no guarantee, warranty or representation about it. It is your responsibility to independently confirm its accuracy and completeness.

All product names, logos, and brands are property of their respective owners. All company, product and service names used in this brochure are for identification purposes only. Use of these names, logos, and brands does not imply endorsement.